

**HD-350
SEE MORE,
ACCOMPLISH MORE,
BENEFIT MORE.**

HD-350 VIDEO PROCESSOR

HD video outputs	DVI, VGA, SDI
Standard video outputs	S-Video, CVBS
HD video recording	Built-in workstation, timely record and review
Zoom / PBP	Yes / Yes
Dimension (L x W x H / weight)	455mm x 370mm x 124mm / 9.5 kg

HDL-35E LIGHT SOURCE

Main lamp	50W LED
Transparency function	7 seconds maximum brightness flicker
Lifetime indicator	Yes
Hot plugging	Endoscope switch without powering off
Dimension (L x W x H / weight)	460mm x 370mm x 154mm / 11kg

430 SERIES SCOPES

Parameter	Gastroscope		Colonoscope			
	EG-430	EG-430L	EC-430	EC-430T	EC-430L	EC-430L/T
Depth of view (mm)	3-100		3-100			
Field of view	140°		140°			
Distal end diameter (mm)	9.3	9.8	12	12	12.9	12.9
Bending section diameter(mm)	9.3	9.8	12.5	12.5	12.9	12.9
Instrument channel diameter (mm)	2.8	3.2	3.8		4.2	
Angulations	UP 210°/DOWN 90° LEFT 100°/RIGHT 100°		UP 180°/DOWN 180° LEFT 160°/RIGHT 160°			
Working length (mm)	1050		1350	1700	1350	1700
Total length (mm)	1350		1700	1950	1700	1950

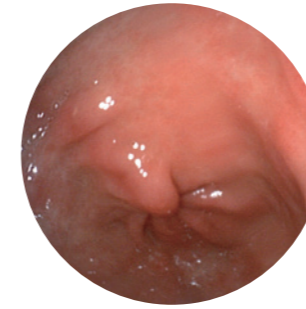


SonoScape Medical Corp.
2F, 12th Building, Shenzhen Software Park Phase II, Keji Middle
2nd Road, Shenzhen, China
Tel: +86-755-26722890 Fax: +86-755-26722850
Email: market@sonoscape.net www.sonoscape.com

ISO 13485  0197

E-HD35020190918

Innovation rewrites the standard. With that in mind, SonoScape Medical presents you the HD-350, a brand new high definition endoscopy system designed specifically for screening and diagnosis with an excellent budget friendliness.



CMOS

With the CMOS image sensor, HD-350 gives high quality images with low noise levels, which leads to improved clarity and optimized vision in not only routine procedures but also in complex interventions.



Smart Workflow

To increase efficiency, patient data management is accessible with the press of a button. The smart workflow of the built-in workstation of HD-350 helps doctors to edit reports, record videos and manage patient files with ease.



Clean and Clear

The waterjet function of the scopes helps to maintain a clear endoscopic view by washing away blood or mucous.

